

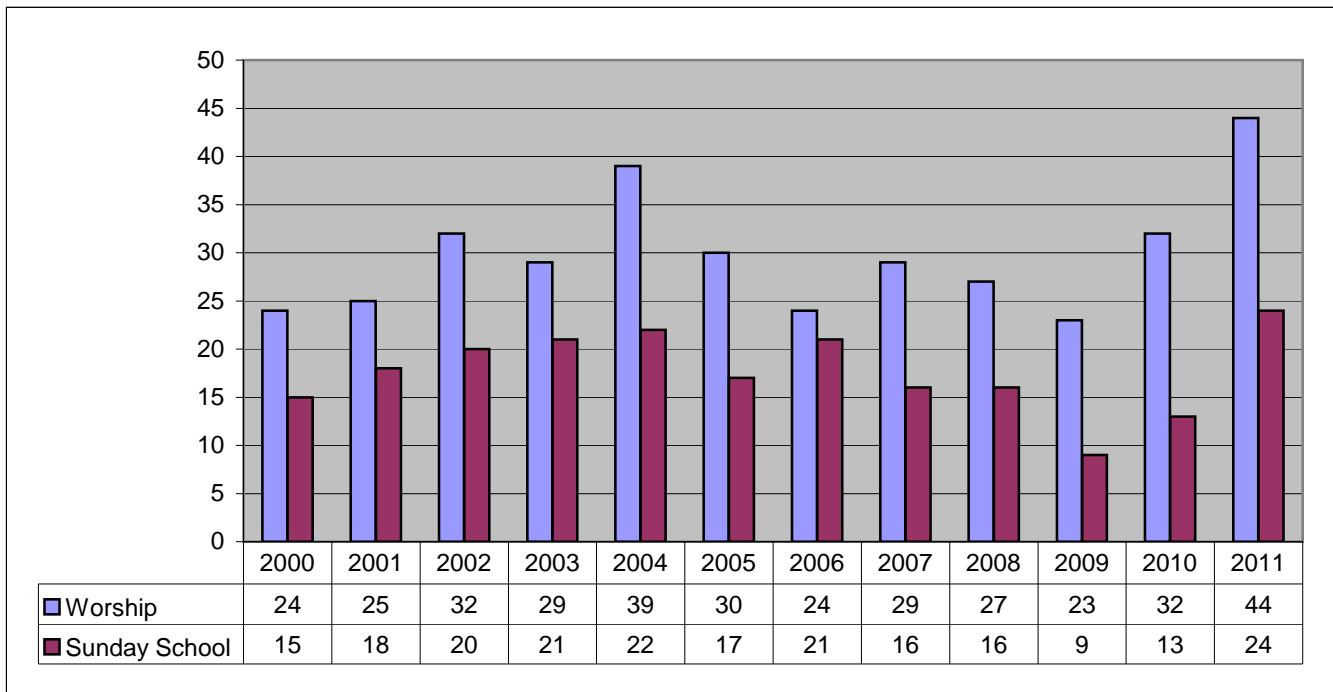
Hazen Chapel Wesleyan Church, Amboy, WA
 Rev. Larry Womelsdorf, Pastor

Attendance

Year	Worship	Sunday School
2000	24	15
2001	25	18
2002	32	20
2003	29	21
2004	39	22
2005	30	17
2006	24	21
2007	29	16
2008	27	16
2009	23	9
2010	32	13
2011	44	24

2010-2011

Membership	30
Conversions	3
Baptisms	1
Contributions	\$27,187.00
USF	100%



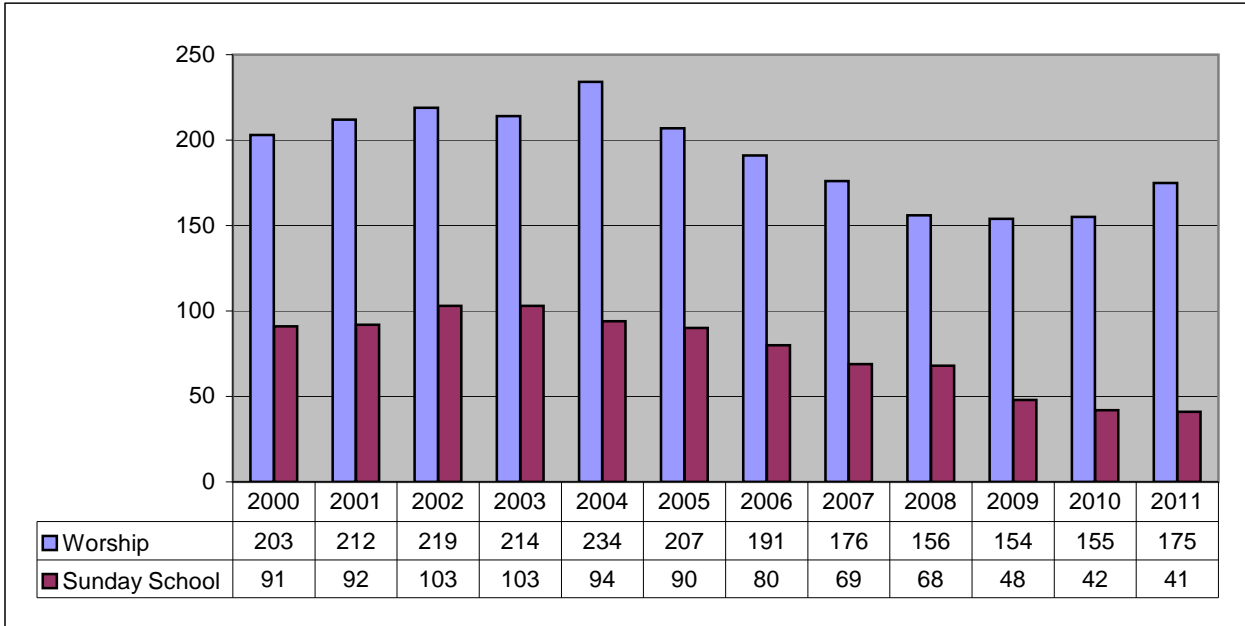
Mountain View Wesleyan Church, Aumsville, OR
 Rev. Mark Schmerse, Pastor

Attendance

Year	Worship	Sunday School
2000	203	91
2001	212	92
2002	219	103
2003	214	103
2004	234	94
2005	207	90
2006	191	80
2007	176	69
2008	156	68
2009	154	48
2010	155	42
2011	175	41

2010-2011

Membership	91
Conversions	12
Baptisms	9
Contributions	\$214,218.00
USF	100%



New Creation Church, Canby, OR
 Rev. Jim Winters, Pastor

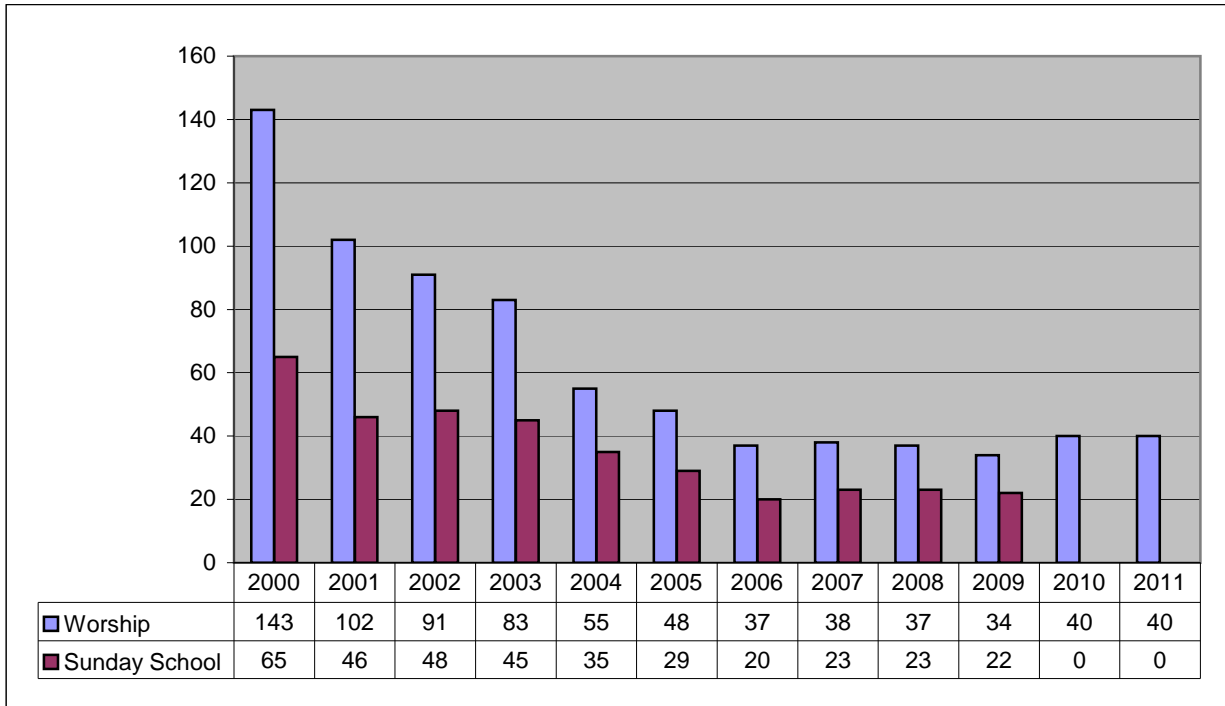
m

Attendance

Year	Worship	Sunday School
2000	143	65
2001	102	46
2002	91	48
2003	83	45
2004	55	35
2005	48	29
2006	37	20
2007	38	23
2008	37	23
2009	34	22
2010	40	0
2011	40	0

2010-2011

Membership	36
Conversions	5
Baptisms	1
Contributions	\$79,450.00
USF	100%



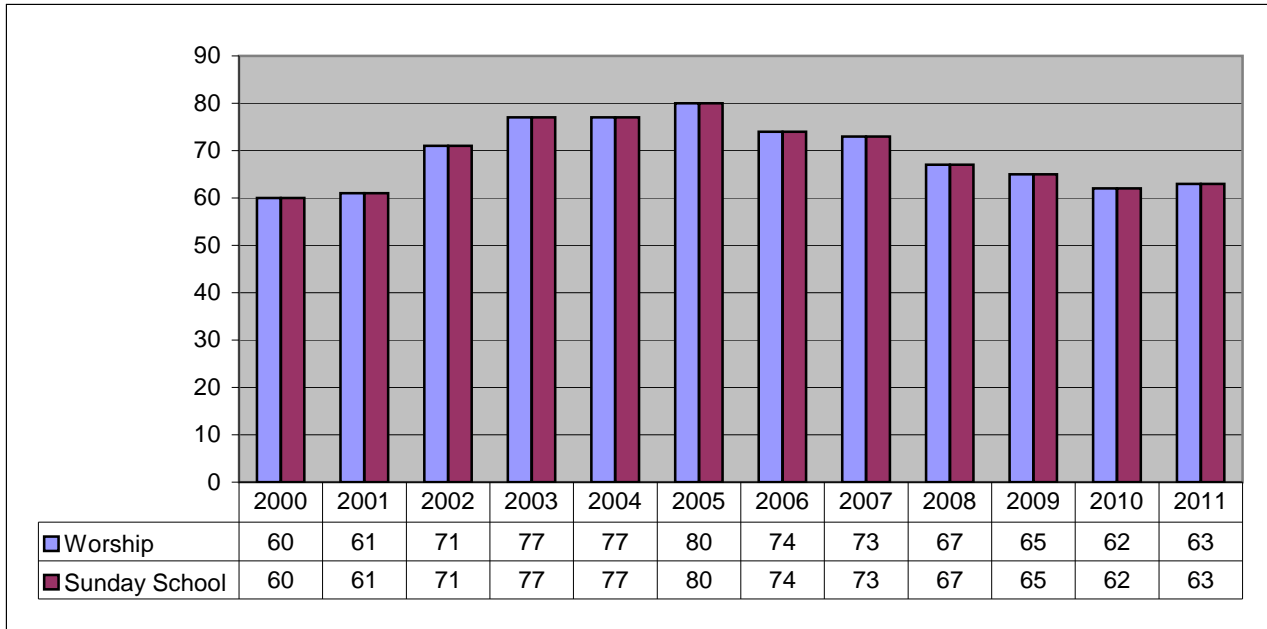
Himmelright Memorial Church, Clarkston, WA
 Rev. Wilber Clark, Pastor

Attendance

Year	Worship	Sunday School
2000	86	60
2001	84	61
2002	90	71
2003	95	77
2004	104	77
2005	125	80
2006	106	74
2007	92	73
2008	89	67
2009	100	65
2010	94	62
2011	91	63

2010-2011

Membership	71
Conversions	28
Baptisms	5
Contributions	\$114,296.00
USF	100%



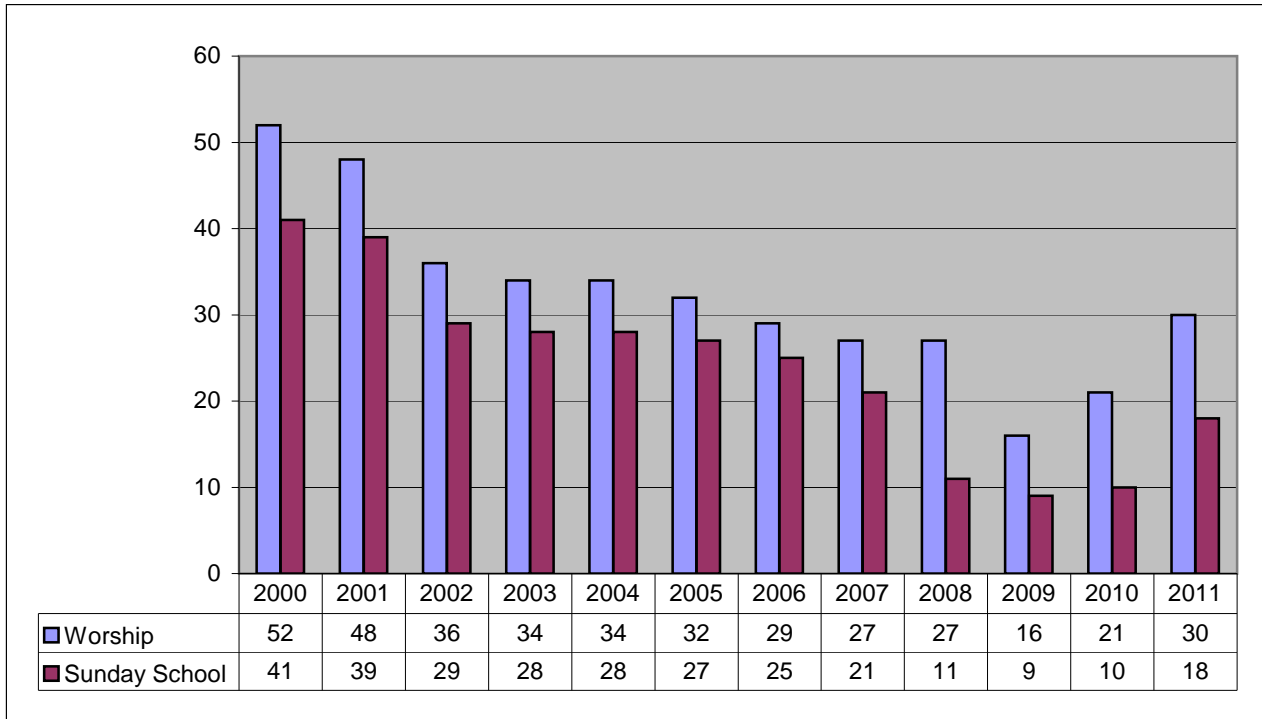
House of Faith, Coeur d'Alene, ID
Willy Prawitz, Pastor

Attendance

Year	Worship	Sunday School
2000	52	41
2001	48	39
2002	36	29
2003	34	28
2004	34	28
2005	32	27
2006	29	25
2007	27	21
2008	27	11
2009	16	9
2010	21	10
2011	30	18

2010-2011

Membership	16
Conversions	4
Baptisms	1
Contributions	\$28,273.00
USF	100%



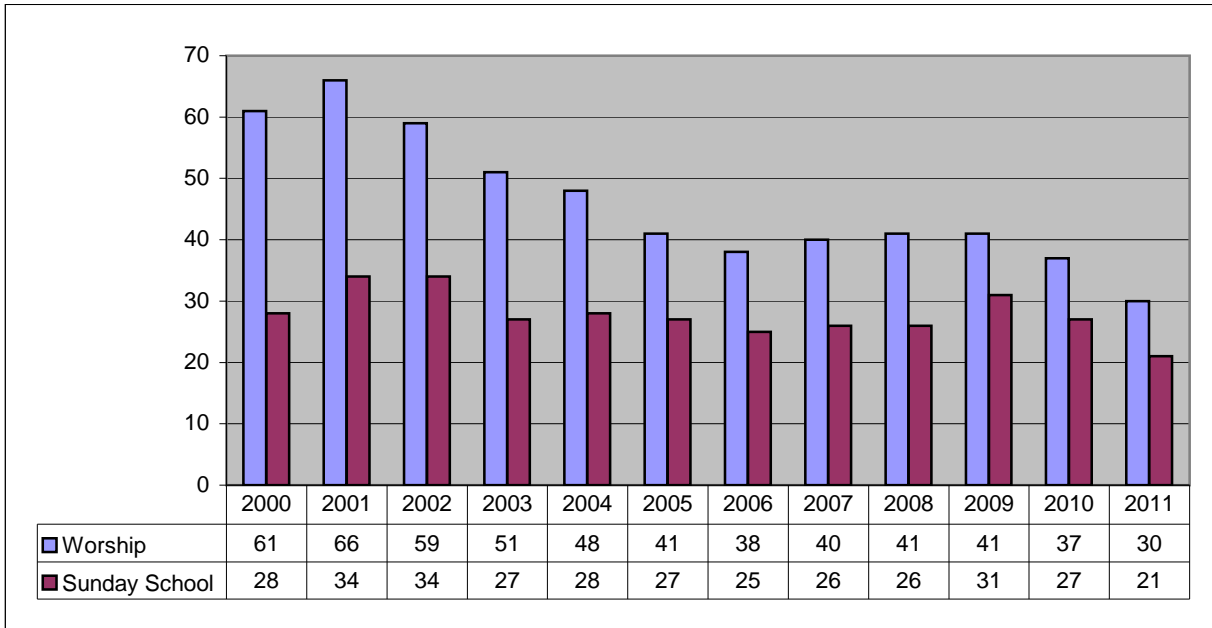
College Crest Wesleyan Church, Eugene, OR
 Rev. Kurt Nybakken, Pastor

Attendance

Year	Worship	Sunday School
2000	61	28
2001	66	34
2002	59	34
2003	51	27
2004	48	28
2005	41	27
2006	38	25
2007	40	26
2008	41	26
2009	41	31
2010	37	27
2011	30	21

2010-2011

Membership	29
Conversions	1
Baptisms	1
Contributions	\$52,066.00
USF	17.5%



The Solid Rock Community Church, Hermiston, OR
 Rev.Gene Berrey, Pastor

Attendance

Year	Worship	Sunday School
2000	24	15
2001	26	15
2002	32	21
2003	37	27
2004	45	32
2005	48	35
2006	48	14
2007	41	23
2008	36	23
2009	31	24
2010	32	26
2011	33	24

2010-2011

Membership	24
Conversions	1
Baptisms	1
Contributions	\$35,469.00
USF	100%



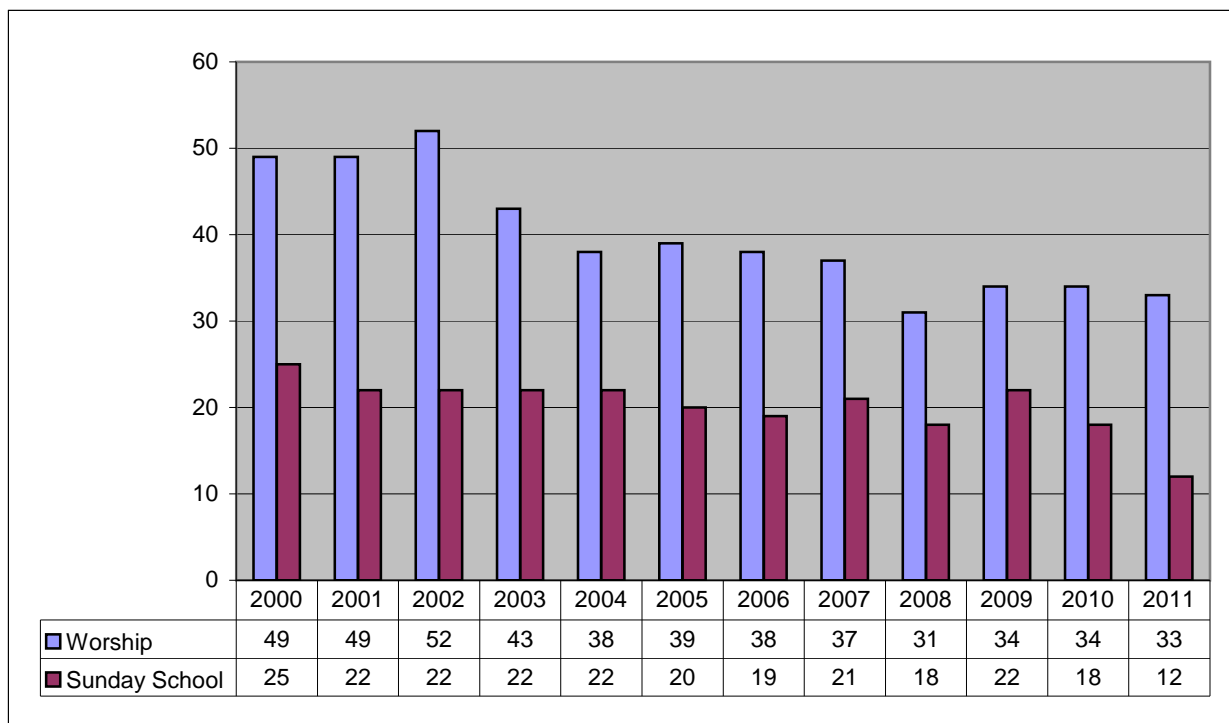
Klamath Falls Wesleyan Church, Klamath Falls, OR
 Rev. Steven Flecken, Pastor

Attendance

Year	Worship	Sunday School
2000	49	25
2001	49	22
2002	52	22
2003	43	22
2004	38	22
2005	39	20
2006	38	19
2007	37	21
2008	31	18
2009	34	22
2010	34	18
2011	33	12

2010-2011

Membership	21
Conversions	3
Baptisms	0
Contributions	\$37,127.00
USF	100%



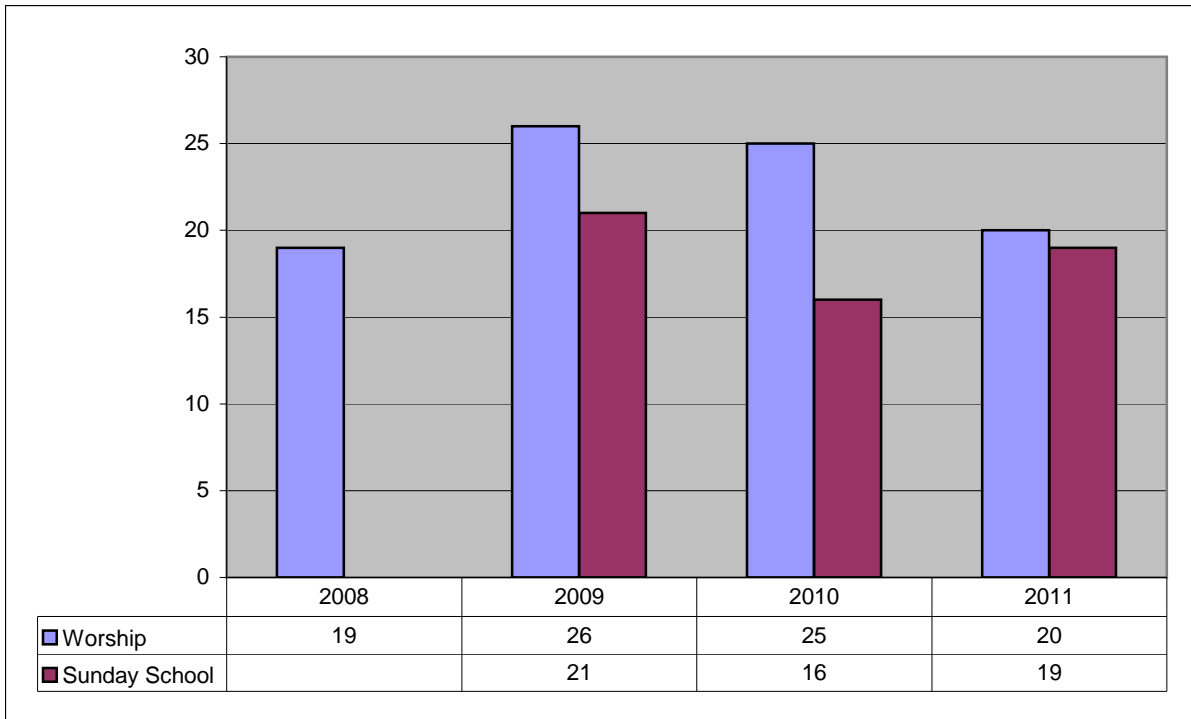
Eternal Hope Wesleyan Church, Kooskia, ID
 Rev. Joshua Blain, Pastor

Attendance

Year	Worship	Sunday School
2008	19	
2009	26	21
2010	25	16
2011	20	19

2010-2011

Membership	13
Conversions	0
Baptisms	1
Contributions	\$15,560.00
USF	100%



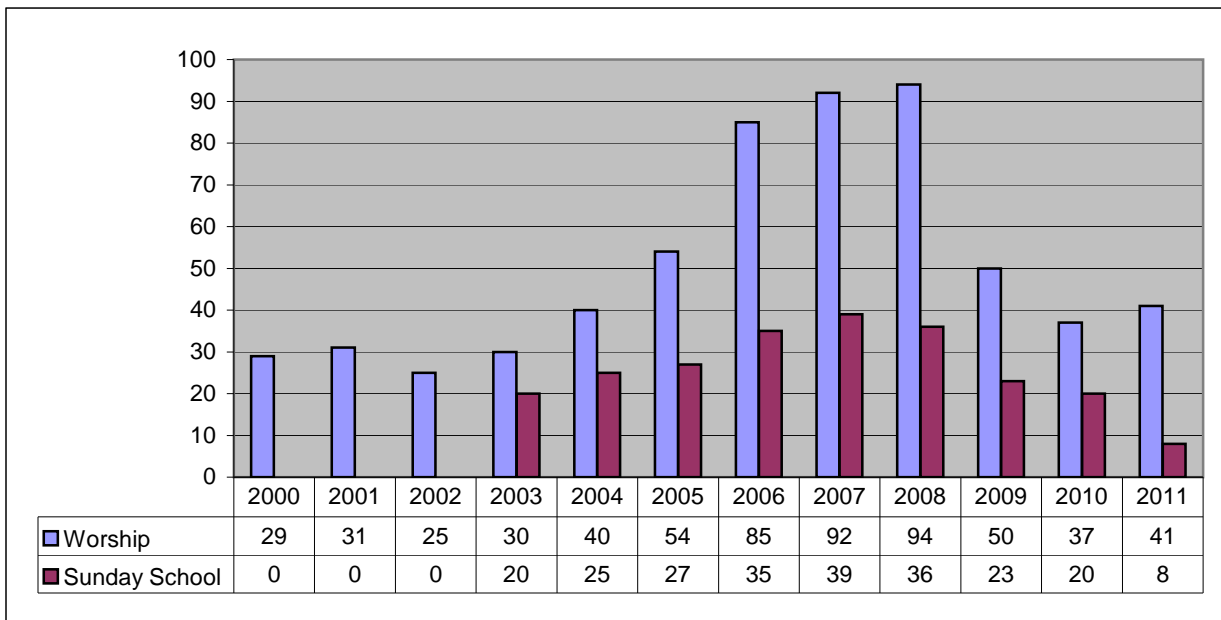
Grace Community Church, Medfprd, OR
Shane Milne, Pastor

Attendance

Year	Worship	Sunday School
2000	29	0
2001	31	0
2002	25	0
2003	30	20
2004	40	25
2005	54	27
2006	85	35
2007	92	39
2008	94	36
2009	50	23
2010	37	20
2011	41	8

2010-2011

Membership	27
Conversions	3
Baptisms	0
Contributions	\$56,311.00
USF	100%



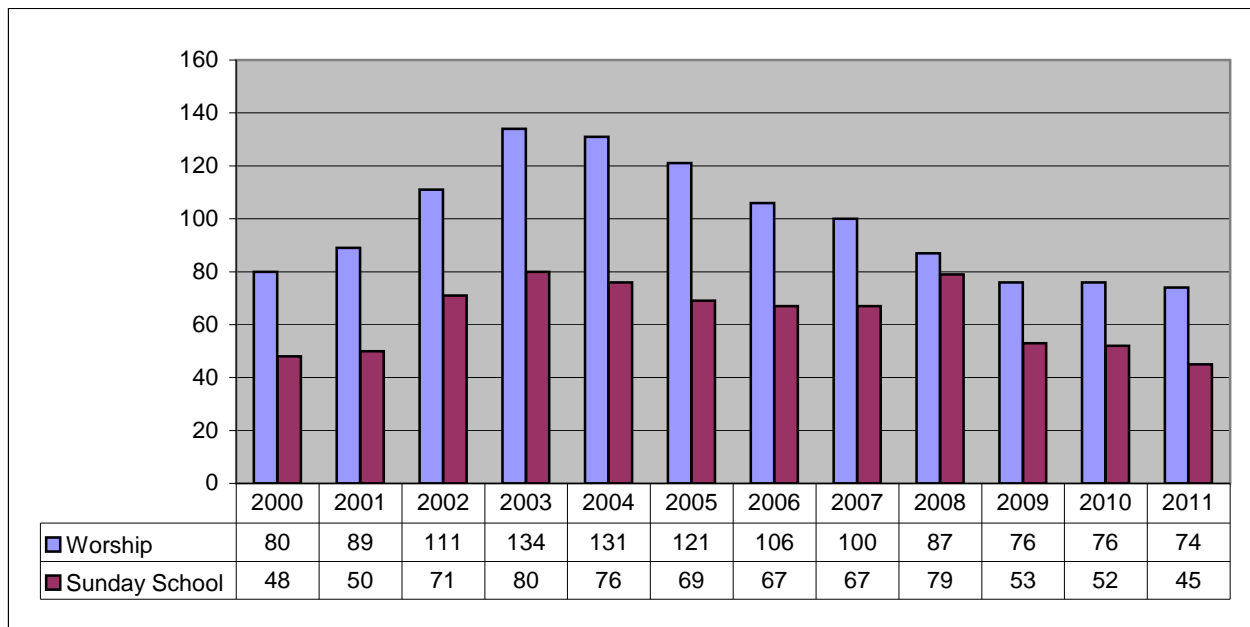
Columbia View Wesleyan Church, Portland, OR
 Rev. Scott Wallace, Pastor

Attendance

Year	Worship	Sunday School
2000	80	48
2001	89	50
2002	111	71
2003	134	80
2004	131	76
2005	121	69
2006	106	67
2007	100	67
2008	87	79
2009	76	53
2010	76	52
2011	74	45

2010-2011

Membership	46
Conversions	9
Baptisms	6
Contributions	\$128,776.00
USF	100%



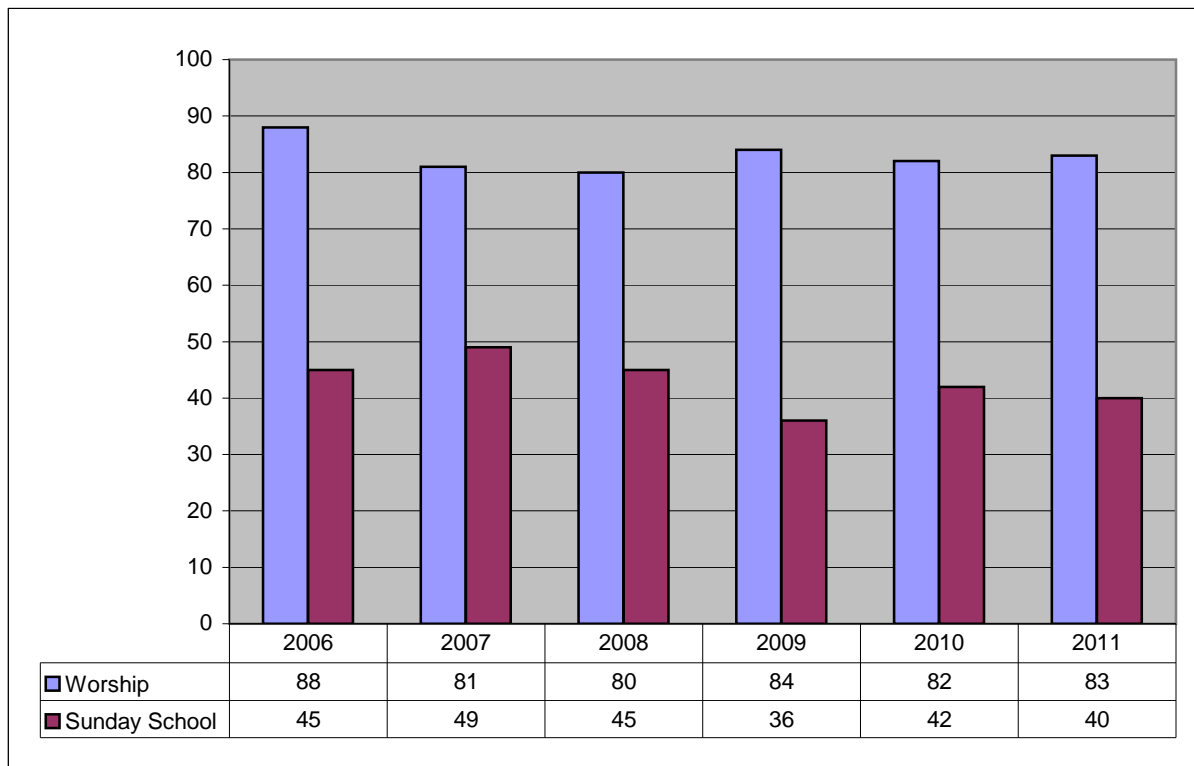
Emmanuel Hope of Glory Wesleyan Church, Portland, OR
Rev. Melvin Baliton, Pastor

Attendance

Year	Worship	Sunday School
2006	88	45
2007	81	49
2008	80	45
2009	84	36
2010	82	42
2011	83	40

2010-2011

Membership	68
Conversions	19
Baptisms	2
Contributions	\$47,075.00
USF	100%



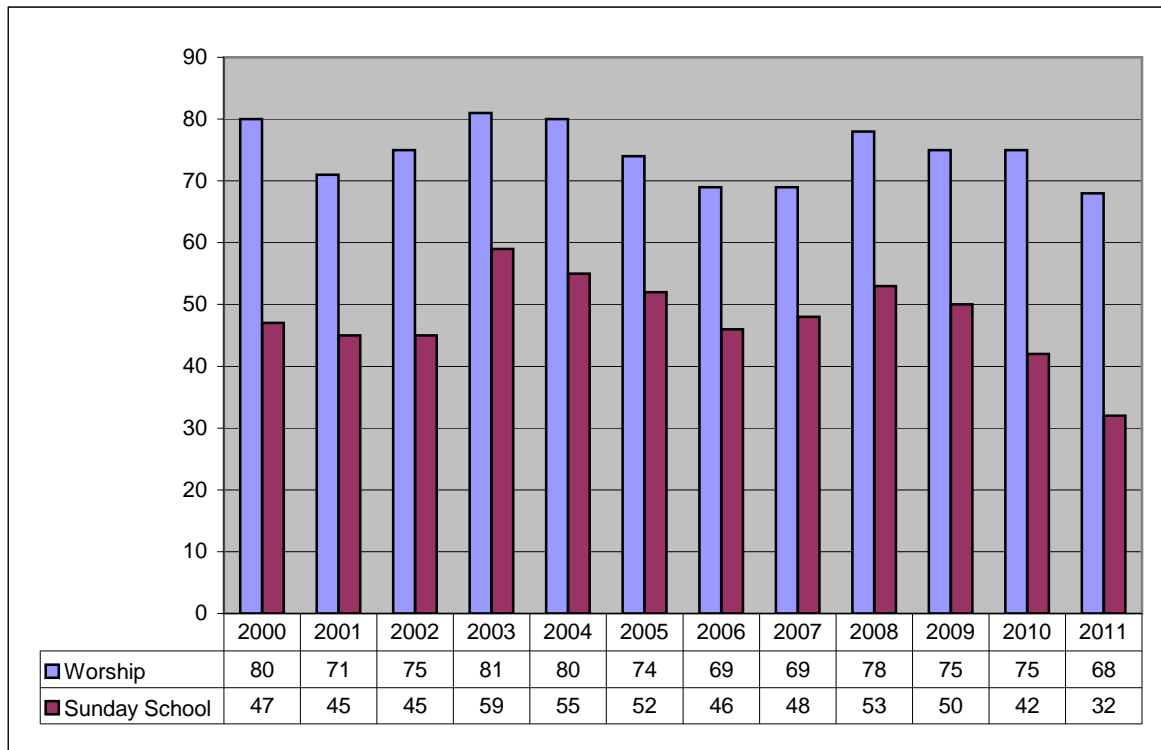
St. John's Wesleyan Church
Rev. Phil Hawk, Pastor

Attendance

Year	Worship	Sunday School
2000	80	47
2001	71	45
2002	75	45
2003	81	59
2004	80	55
2005	74	52
2006	69	46
2007	69	48
2008	78	53
2009	75	50
2010	75	42
2011	68	32

2010-2011

Membership	45
Conversions	2
Baptisms	2
Contributions	\$67,187.00
USF	100%



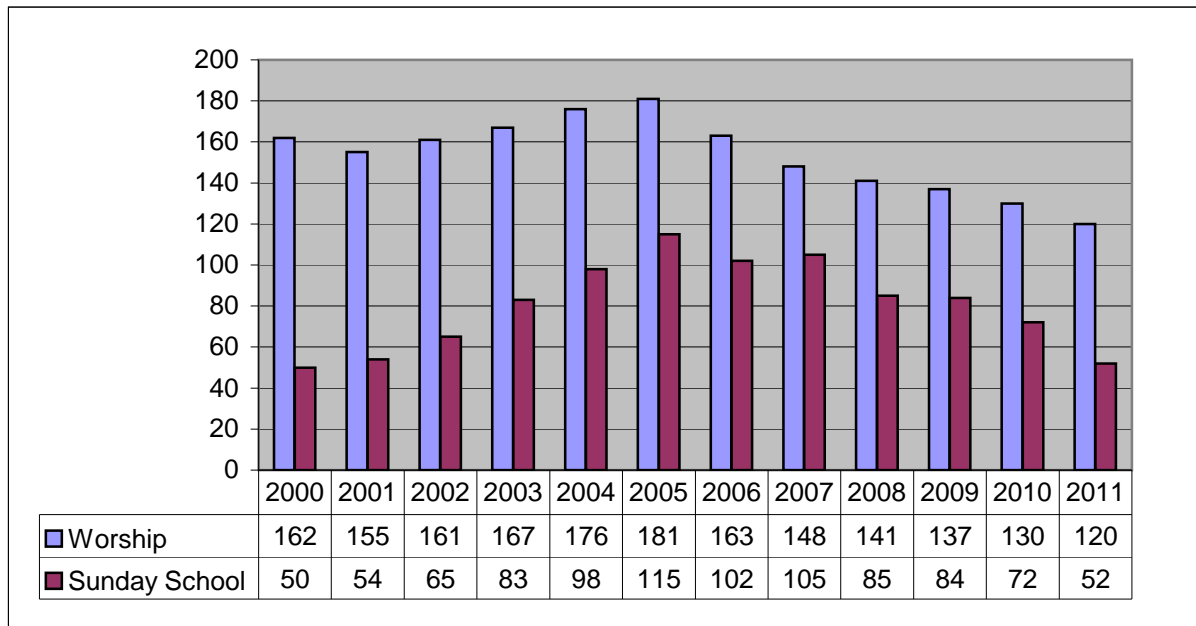
Capital Park Wesleyan Church, Salem, OR
 Rev. Jerry Sloan, Pastor

Attendance

Year	Worship	Sunday School
2000	162	50
2001	155	54
2002	161	65
2003	167	83
2004	176	98
2005	181	115
2006	163	102
2007	148	105
2008	141	85
2009	137	84
2010	130	72
2011	120	52

2010-2011

Membership	79
Conversions	24
Baptisms	0
Contributions	\$165,348.00
USF	104.10%



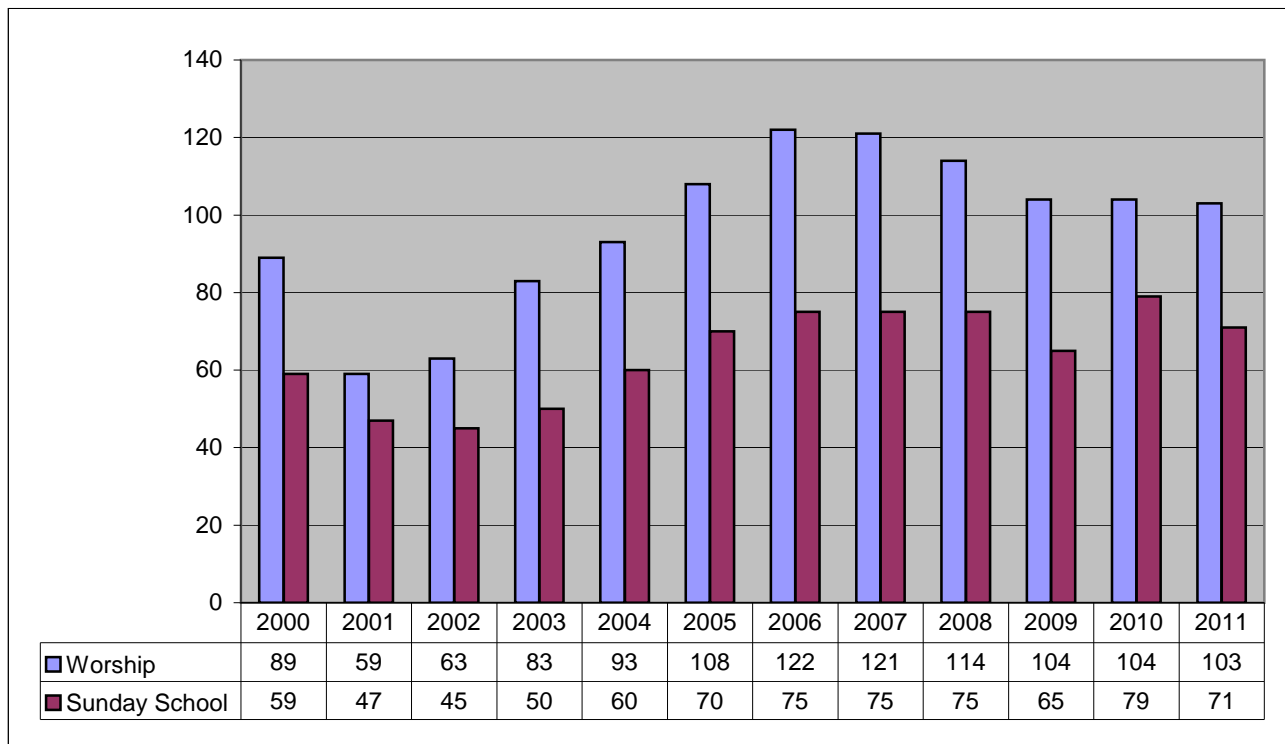
Northgate Wesleyan Church, Salem, OR
 Rev. Dane Gjesdal, Pastor

Attendance

Year	Worship	Sunday School
2000	89	59
2001	59	47
2002	63	45
2003	83	50
2004	93	60
2005	108	70
2006	122	75
2007	121	75
2008	114	75
2009	104	65
2010	104	79
2011	103	71

2010-2011

Membership	54
Conversions	12
Baptisms	2
Contributions	\$123,101.00
USF	100%



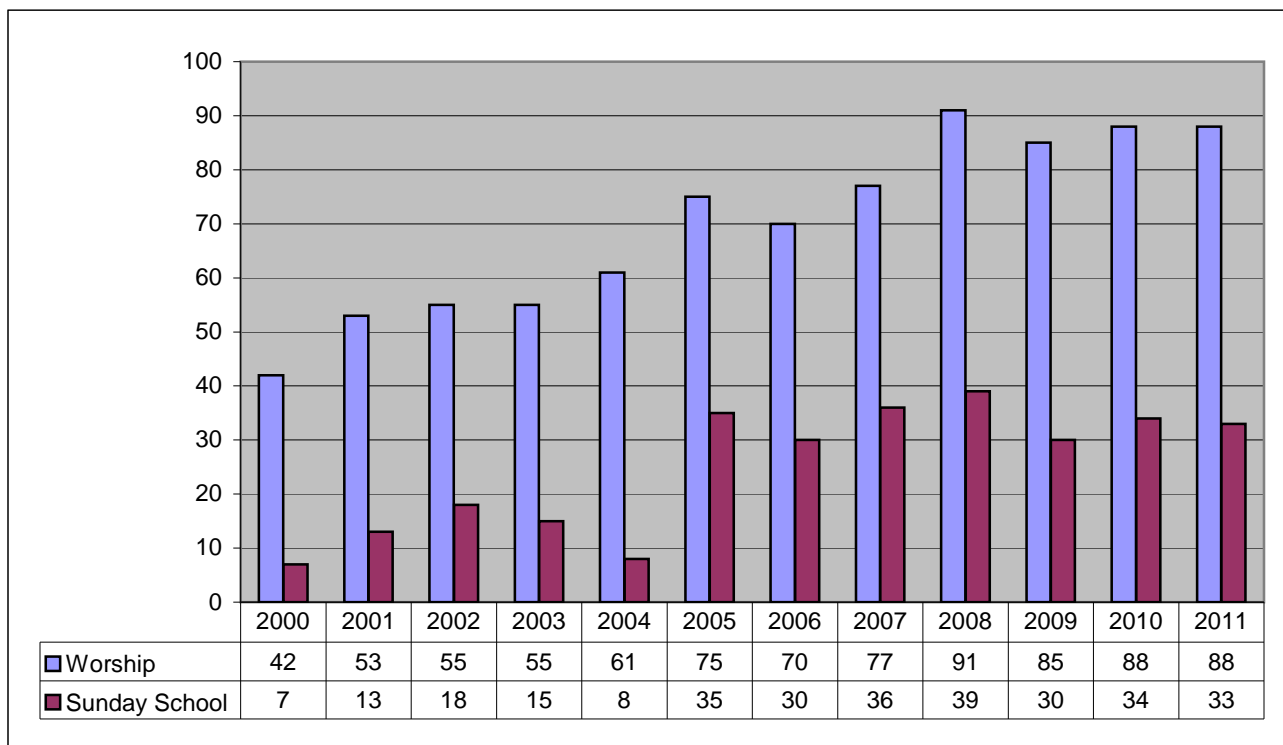
Spokane Valley Church, Spokane, WA
 Rev. Darrell Cole, Pastor

Attendance

Year	Worship	Sunday School
2000	42	7
2001	53	13
2002	55	18
2003	55	15
2004	61	8
2005	75	35
2006	70	30
2007	77	36
2008	91	39
2009	85	30
2010	88	34
2011	88	33

2010-2011

Membership	56
Conversions	17
Baptisms	8
Contributions	\$105,560.00
USF	100%



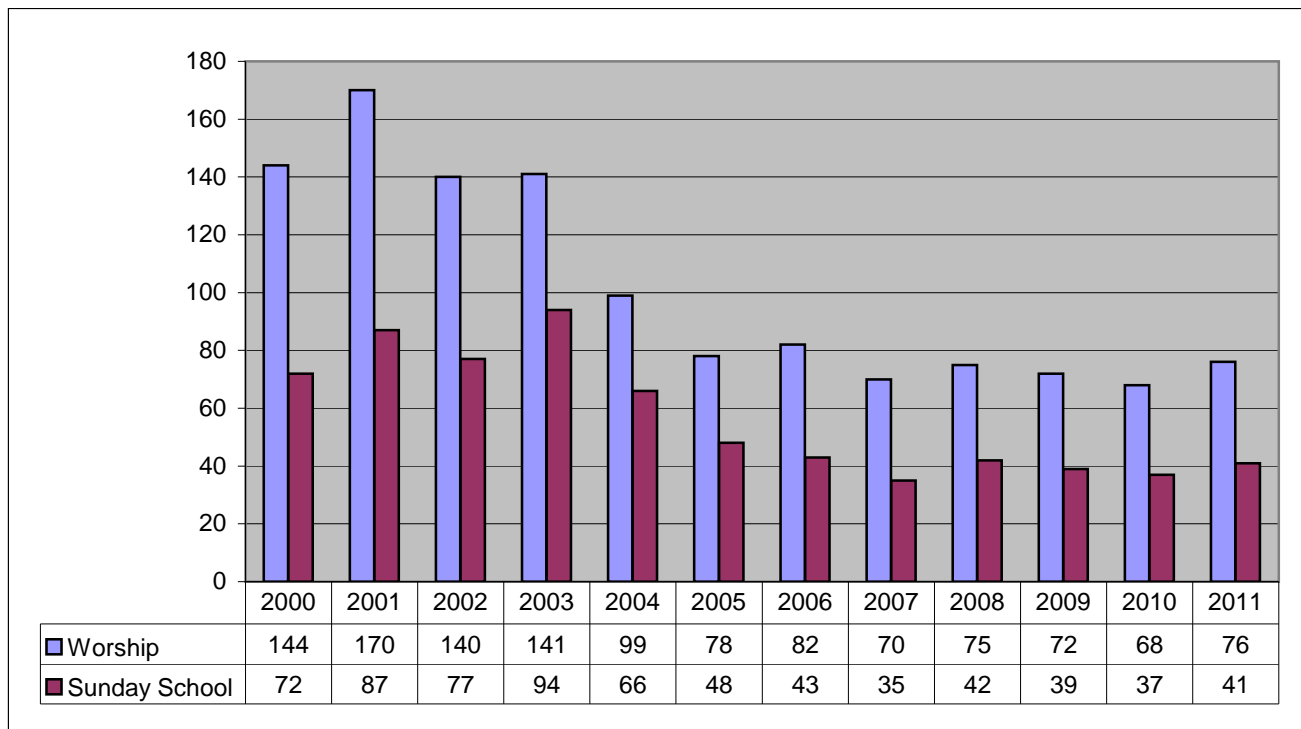
Vancouver Wesleyan Church, Vancouver, WA
 Rev. Jarod Osborne, Pastor

Attendance

Year	Worship	Sunday School
2000	144	72
2001	170	87
2002	140	77
2003	141	94
2004	99	66
2005	78	48
2006	82	43
2007	70	35
2008	75	42
2009	72	39
2010	68	37
2011	76	41

2010-2011

Membership	55
Conversions	0
Baptisms	1
Contributions	\$71,275.00
USF	69%



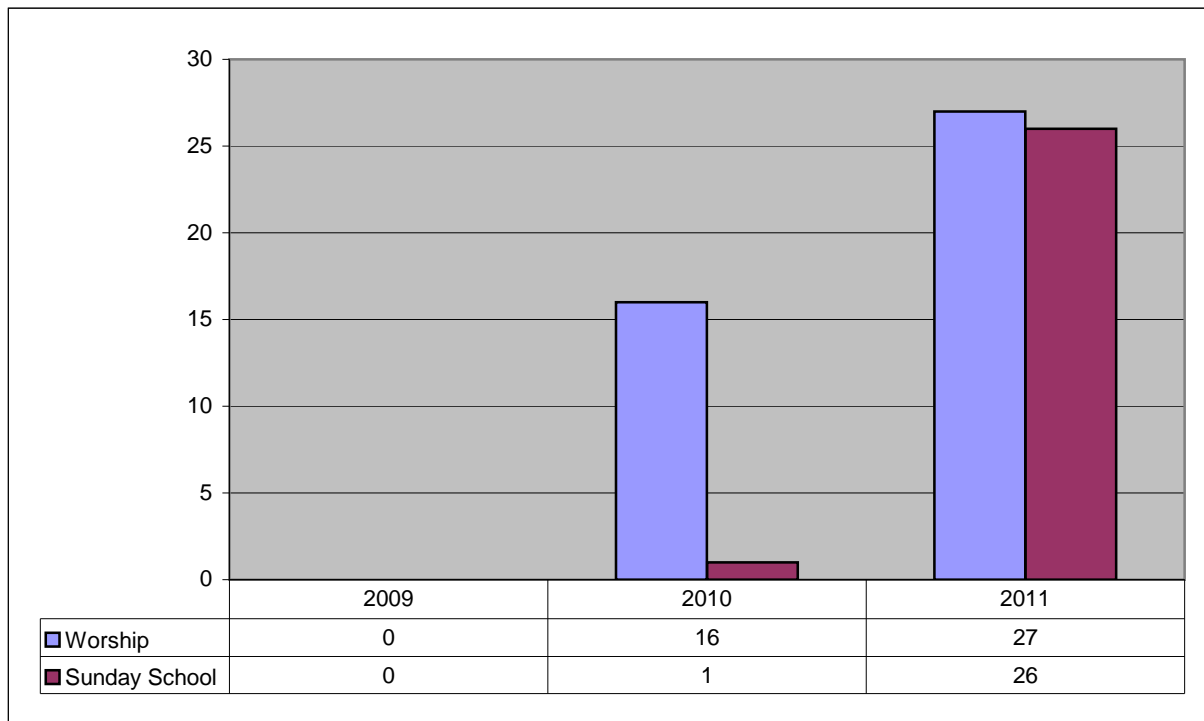
Crossway Christian Church, Vancouver, BC
 Rev. Joseph Zhou

Attendance

Year	Worship	Sunday School
2009	0	0
2010	16	1
2011	27	26

2010-2011

Membership	6
Conversions	10
Baptisms	6
Contributions	\$23,844.00
USF	100%



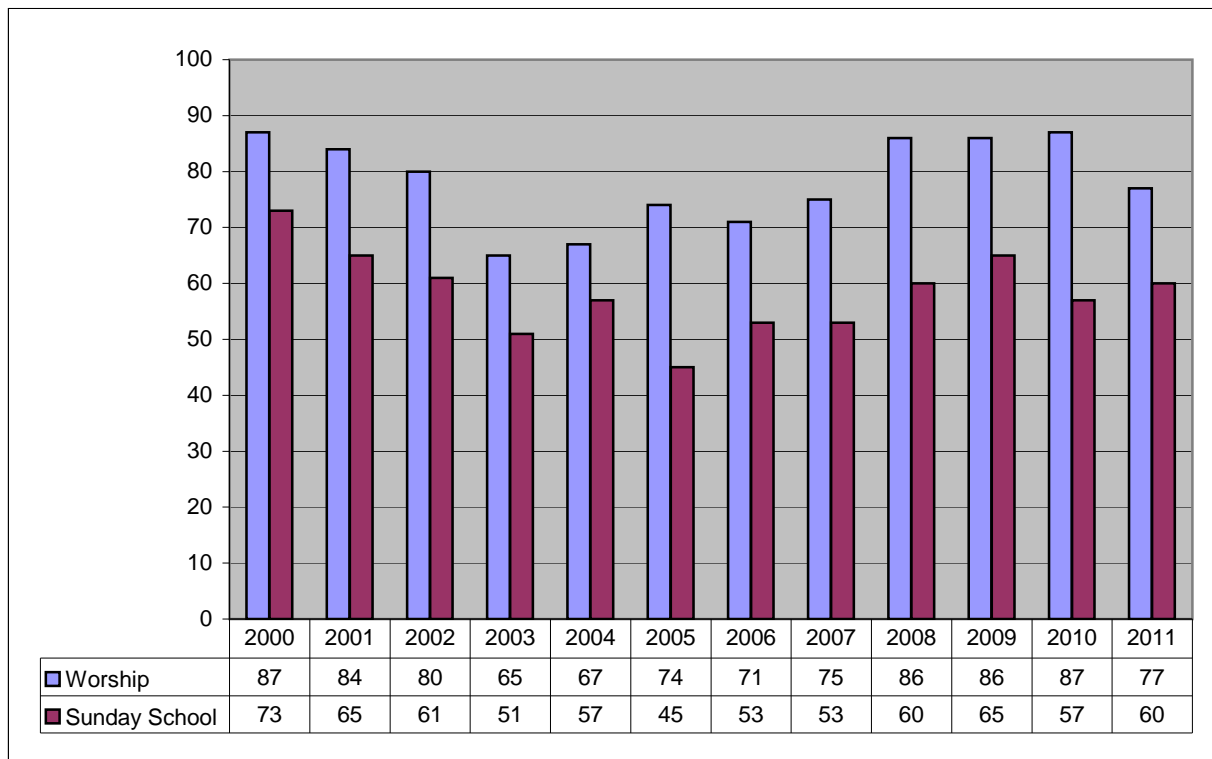
Memorial Wesleyan Church, Weippe, ID
 Rev. Don Blain, Pastor

Attendance

Year	Worship	Sunday School
2000	87	73
2001	84	65
2002	80	61
2003	65	51
2004	67	57
2005	74	45
2006	71	53
2007	75	53
2008	86	60
2009	86	65
2010	87	57
2011	77	60

2010-2011

Membership	43
Conversions	7
Baptisms	6
Contributions	\$79,876.00
USF	100%



Spirit Alive Church, Yakima, WA
 Rev. Larry Meeks, Pastor

Attendance

Year	Worship	Sunday School
2000	67	34
2001	82	40
2002	79	33
2003	76	47
2004	77	51
2005	84	53
2006	86	51
2007	77	33
2008	54	35
2009	59	37
2010	66	37
2011	73	33

2010-2011

Membership	56
Conversions	17
Baptisms	8
Contributions	\$105,560.00
USF	100%

